



Profile of Shortlisted Design Teams

(in alphabetical order)



West Kowloon Cultural District Authority
西九文化區管理局

BTA & RLP Company Limited

WEST KOWLOON CULTURAL DISTRICT - XIQU CENTRE

BTA + RLP Company Ltd. (a Joint Venture Partnership between Bing Thom Architects, Vancouver and Ronald Lu and Partners, HK) is delighted to be invited to participate in the architectural competition for the design of the West Kowloon Cultural District's Xiqu Centre. A centre of artistic and cultural dialogue, this ground-breaking performing arts centre will be the first signature venue in the WKCD and will set the standard for what will become the largest cultural precinct in the world.

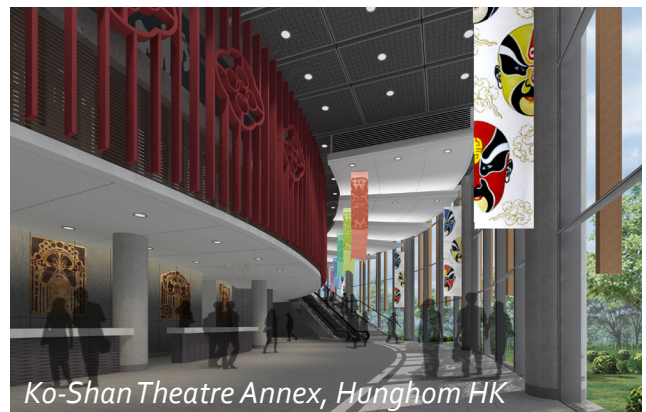
The Xiqu Centre will be a platform not only for the preservation and development of Chinese Opera in Hong Kong, but also for the interaction between Xiqu and other performing arts. Chinese Opera has a long and well respected tradition in Hong Kong and is evolving into thriving contemporary art form. The new Xiqu Centre will nurture this evolution, transcending Chinese Opera to ensure its continuity and growth for the future. Blending and respecting a deep history with current culture and theatre technology into a contemporary form, the result will be an innovative and inspired architectural icon that will become an internationally recognized front door for the WKCD.

Together with renowned specialty consultants from around the globe, our fluently bilingual (Chinese/Cantonese) team blends Hong Kong roots with extensive skills in performance arts centres and a long-standing history in the research and design of Chinese Opera venues. BTA + RLP look forward to igniting the imagination and creating a cultural landmark that will inspire both the public and artists alike.

* * * * *



Arena Stage, Washington DC



Ko-Shan Theatre Annex, Hunghom HK

Bing Thom Architects (BTA) is an internationally recognised Canadian architecture and urban planning firm with a 30-year history in large scale performing arts, cultural and public institutional projects. With major works in Canada, the US, China, BTA is known for design excellence and project leadership. Winner of the 2010 Royal Architecture Institute of Canada Firm of the Year Award, BTA inspires diverse teams of professionals to produce exceptional work.

www.bingthomarchitects.com

Ronald Lu and Partners (RLP) is an award winning architecture firm founded in 1976 by Dr. Ronald Lu, with major works in Hong Kong and Mainland China. A leader in sustainable design, RLP is also recognized for design excellence in Community and Cultural projects, including the first purpose designed Chinese Opera facilities in Hong Kong, the Ko Shan Theater Annex. Since 2004, RLP has won over 40 local and international design awards.

www.rlphk.com

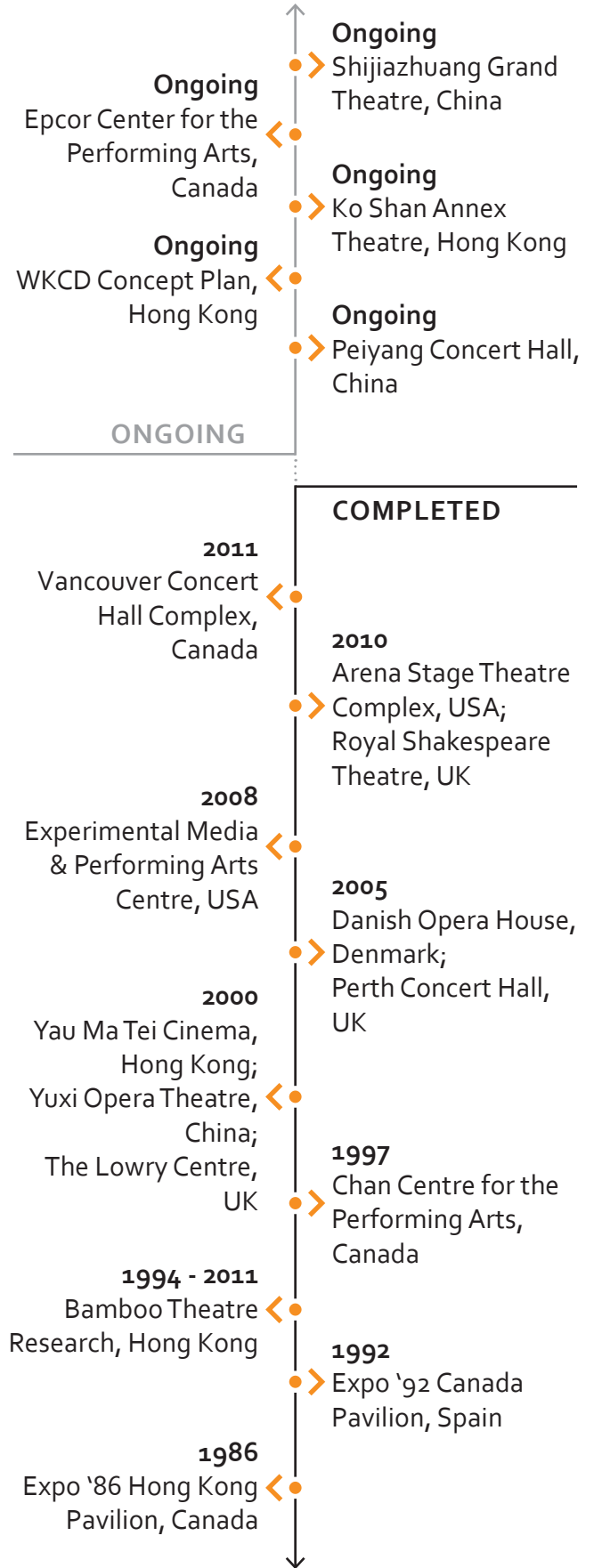
DESIGN TEAM

BTA+RLP is a unique partnership that combines BTA's design strength and international reputation on high profile performing arts projects with RLP's deep local knowledge and excellent project design and delivery expertise. RPL's recent experience implementing the WKCD master plan ensures that the design of the Xiqu Centre will tie into the larger vision for this important cultural precinct. At BTA + RLP, we strive towards a holistic approach to architecture, which we see as a collaborative effort of many individuals and disciplines. In particular, Bing Thom's charismatic ability to bring focus, inspiration and consensus amongst a wide variety of stakeholders is legendary.

BTA and RLP have long had an interest in Chinese Opera and over the past 26 years have been involved in such relevant projects as the building of Ko Shan Theatre Annex, Feasibility Study of Revitalizing Yau Ma Tei Theatre, Research in Bamboo Theatre Cantonese Opera and the design of the Yuxi Opera Theatre.

For the Xiqu Centre we have assembled our most passionate and talented staff. This team is respected for both their project design and execution virtuosity. The collective team has worked on landmark projects such as Arena Stage in Washington DC, Epcor Centre for the Performing Arts in Calgary Canada, Chan Centre for the Performing Arts in Vancouver Canada in addition to many others including those mentioned above.

To supplement the architectural design team, we have also brought together an exceptionally strong team of local and international experts in engineering and design including Buro Happold/ Atkins (total engineering - SMEP and Civil), the SWA Group (landscape) and MVA (traffic). As a fully integrated team, we are looking forward to creating and delivering a vision for the Xiqu Centre that will support the tradition of Chinese Opera and transform the West Kowloon Cultural District through the power of performing arts.





West Kowloon Cultural District Authority
西九文化區管理局

Foster + Partners with O Studio Architects

XIQU CENTRE

VISION

Our shared vision for the Xiqu Centre is inclusive and forward-looking – it will be a contemporary building, but with a familiar, traditional appeal. The Centre will nurture the art form, taking it from temporary bamboo venues to an international stage, while echoing these origins with open-air performances in Xiqu Square.

As the first building to be constructed in the new West Kowloon Cultural District and as Hong Kong's first purpose-built Xiqu venue, it will be a powerful signal of the city's cultural transformation. Its wider function is to provide a much-needed home and educational focus for the Xiqu community, to celebrate the art form and to inspire both a new audience and a new generation of performers.

Bill and Margot Winspear Opera House by Foster + Partners redefines the essence of an opera house for the twenty first century, breaking down barriers to make opera more accessible for a wider audience.

Church of Seed by O Studio Architects is situated within the beautiful landscape of Luofu Mountain, China, where it lies in harmony with the natural environment.



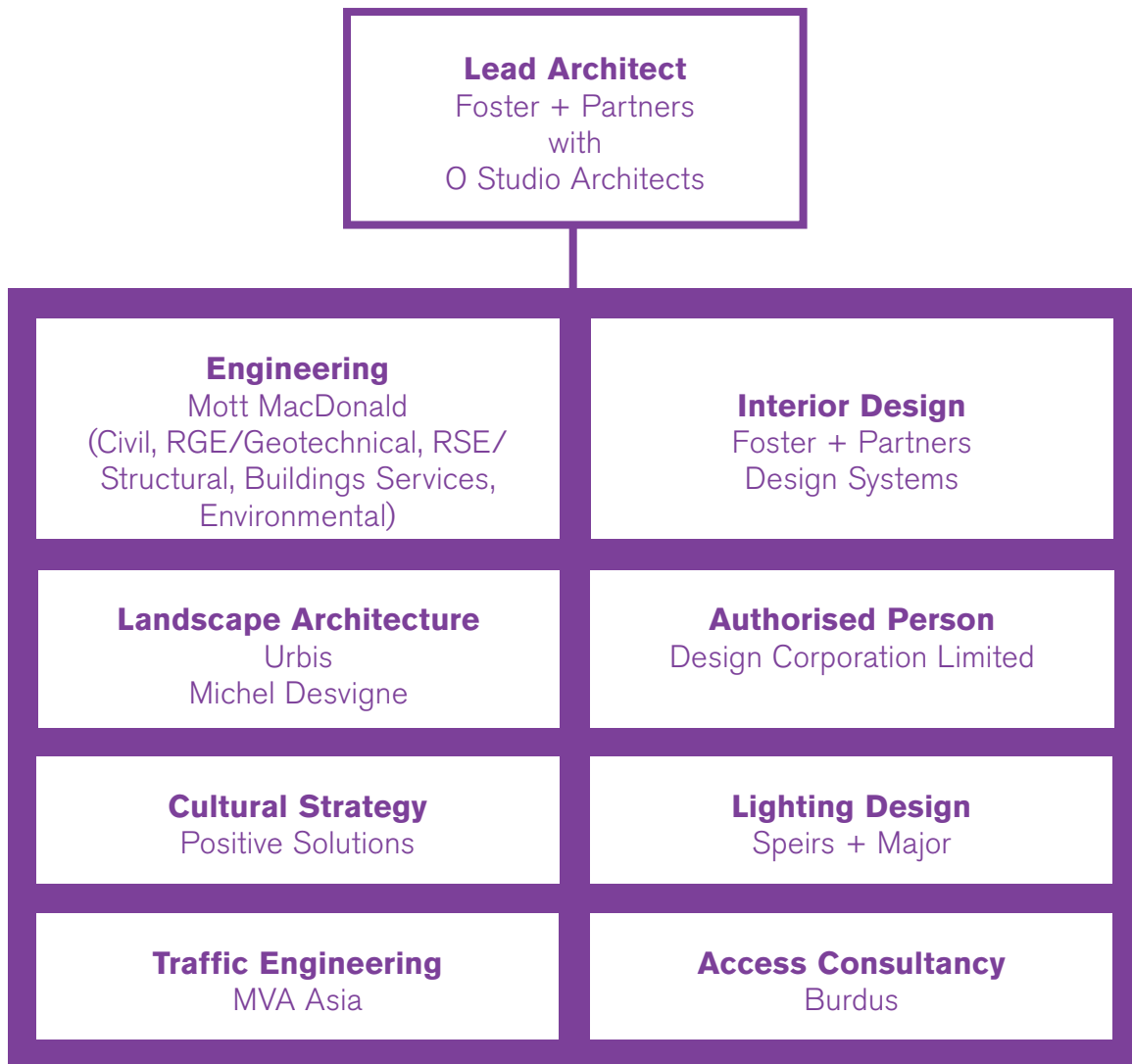
CREATIVE TEAM 創作團隊

Foster + Partners has been working in Hong Kong for thirty-three years. The practice has designed some of the world's largest and most complex infrastructure and building projects, including the West Kowloon Cultural District masterplan, and brings an integrated team of architects, designers and engineers. Our cultural projects have been driven by an aim to open theatre, opera and the arts to a wider audience.

O Studio Architects is an award-winning young Hong Kong practice established by Fai Au, whose recent projects have gained worldwide acclaim for their contemporary reinterpretation of traditional Chinese materials and construction techniques.

Xiqu experts **Chan Ben, He Xin Rong** and **Lin Jung** of **Guangdong Opera House**, with their extensive experience in Xiqu, are an invaluable source of guidance and inspiration. As with all public buildings, art will play an integral part in the Xiqu Centre and curator **Johnson Chang** and artist **Yi Zhou** will collaborate with us from the outset.

Our strong creative team combines local knowledge with international experience. Together, we are uniquely placed to create a dynamic new home for Xiqu in Hong Kong.





West Kowloon Cultural District Authority
西九文化區管理局

Mecanoo architecten / Leigh & Orange



Wei-Wu-Ying Center for the Arts, Kaohsiung, Taiwan

project vision

In a city with an effervescent night life, where the performance arts are a significant part of the popular culture an architect could never design a new performance venue without taking into careful consideration contextual aspects. In most of Mecanoo's designs the context is always the starting point. It is our vision that the creation of something unique must always be intrinsically connected with the spirit of a place and Hong Kong is a city with a special soul and spirit. By exploring the unique qualities of the city we would be able to design a performance venue unlike any other in the world. In the days of fast media, fashion is now global and of-the-moment, preserving a local identity that took years to evolve is

now of great importance and value. Although a European office Mecanoo has been successful in finding the "genius loci" of each site in which we intervened. Mecanoo's Asian projects are uniquely global yet Chinese, modern but still timeless. Understanding the local culture and way of life has made our projects much richer and capable of engaging with the local population on levels far beyond the initial expectations of our clients.

The Wei-Wu-Ying Center for the Arts project in Taiwan and the la Llotja theatre in Spain are examples how we managed to generate public spaces that place the performance arts in direct dialogue with urban life. We don't see our public buildings as sterile lifeless icons, instead they must have the capability to bring the performing arts back out into the streets. With this vision forming the key element of our design approach, we understand that it is crucial to explore Kowloon's and Hong Kong's vitality and incorporate this into the design of the new Xiqu Centre. Not only will this building preserve and promote Xiqu to the local community and tourists, but it will establish the WKCD as the place where Chinese traditional culture is expressed.

company profiles and background

mecanoo architecten

Mecanoo is an internationally operating office based in Delft, the Netherlands made up of over 95 design professionals from all over the world, creating a truly globally influenced practice. We have been in practice for over 30 years. Francine Houben, our founding director is involved in every project and this keeps the practice running with a clear philosophy toward every project. Our size and a clear focus within our bureau afford us the ability to approach every project as one in relationship with its context. Our international experience continually informs how we work, think and approach architecture.

We are fortunate to have a strong portfolio of award winning cultural projects which include performing arts venues, museums, schools and libraries including the Wei-Wu-Ying Center for the Arts in Kaohsiung, Taiwan (2014), the new Library of Birmingham integrated with the REP theatre in the UK which includes a new shared theatre and foyer (2013), and the National Heritage Museum in the Netherlands, La Llotja Theatre and Congress Centre in Spain (2010) and the new Cultural Facility at First Street in Manchester, UK (2104). Mecanoo was recently selected to design a new 83,500 m² Cultural Facility in Shenzhen, China (2014).

leigh & orange

Founded in 1874, our partner based in Hong Kong, Leigh & Orange has many years of experience designing and managing complex architecture and interiors projects in Hong Kong including Shatin and Happy Valley Racecourse, Ocean Park, Disneyland and Hong Kong Science Park, HSBC Data Centre and City University of Hong Kong. This local Hong Kong registered practice is well suited to ensuring that the design process and construction administration is managed fluently and effectively.

The experience of the practice encompasses many different building types including leisure parks, sports complexes, science & business parks, broadcasting facilities, equestrian facilities, commercial mixed developments, hospitals, hospitality projects, industrial projects, laboratories, offices, private clubs, private residences, recreational facilities, data centres, residential complexes, retail, schools university buildings, infrastructure facilities and transport interchanges.

L&O has offices in Hong Kong, China and the Middle East employing over 500 people. Among L&O's 250 staff in the Hong Kong office they employ over 100 professional staff.

arup

Arup was established in 1946 in the United Kingdom with the sole intention of providing an independent professional consulting engineering service. Since then, Arup has grown into an international multi-disciplinary consulting engineering practice with operations in Europe, the USA, the Middle East, Asia, Australia and Africa, and approximately 10,000 staff working across 35 countries in over 92 offices.

Arup have been in practice in Hong Kong since 1976 providing consulting engineering services in all disciplines in the fields of building, civil, building services and industrial engineering. Arup have worked on various aspects of the West Kowloon Cultural District area over the past ten years, ranging from the original design competition in 2003 to the most recent competition in 2010, leading to our work with the winning team on the concept master-plan development for the whole of the cultural district.

design team composition

Mecanoo/Leigh & Orange have joined together with Arup to create a balanced team with a strong history of successfully designing and delivering high profile award winning cultural projects.

Mecanoo architecten is design team leader, working closely with the client, stakeholders and project team to create a new home for Xiqu in the WKCD.

Leigh & Orange has extensive experience in handling large scale Hong Kong projects and is well positioned and will deliver the project from inception through to completion to ensure that the design process and construction administration is managed fluently and effectively to deliver the highest achievable result for West Kowloon Cultural District Authority.

Arup will provide extensive multidisciplinary services including Structural, MEP, Civil, Geotechnical, Façade, Traffic and Transportation, Building Sustainability, Audio Visual, Communications and IT, Audio visual, Fire engineering, Risk and Security, Lighting design and environmental engineering.



La Llotja Theatre and Congress Center, Lleida, Spain



West Kowloon Cultural District Authority
西九文化區管理局

Safdie Architects LLC



Introductory Brief | Vision of the Project

A great opera house must be a perfect instrument. It must have great acoustics and sightlines, and its stage facilities should encourage the most diverse and imaginative productions.

A great opera house must also celebrate the ritual of partaking in the artistic and cultural life of the community. It must be an extroverted building -- inviting, transparent, making the life within it visible to the city around.

As a place for the production of traditional Chinese opera, the design for the Xiqu Centre must connect the past with the present and point to the future. To totally belong, it must capture the essence of Chinese history and culture, while pointing forward to China's great future.

It must be a design that "might have always been there", and is also clearly of today. To be truly iconic, the design must draw on all these facets: the perfect instrument, celebrating public life, rooted in its culture. We will seek these qualities as we aim to create a truly timeless, iconic structure.

-Moshe Safdie

Above | *ArtScience Museum, Singapore*

Right | *Kauffman Center for the Performing Arts, Kansas City, Missouri, US*

Company Profiles and Backgrounds

Safdie Architects is an international architectural and urban planning practice founded in 1964 and led to the present day by Moshe Safdie. Deeply committed to the creation of architecture that responds to local and regional characteristics of landscape, climate, cultural heritage, and contemporary life, Safdie is recognized for creating welcoming buildings and public spaces that contribute in meaningful ways to their setting while catalyzing a vibrant public life.

The design of cultural institutions is a cornerstone of our practice. Our most recent performing arts projects are notably successful for the revitalisation of their communities, ranging from the acclaimed Kauffman Center for the Performing Arts in Kansas City, Missouri in the US to the ArtScience Museum at Marina Bay Sands integrated resort in Singapore.

Design Team Composition

Our team is organised by Safdie Architects as the lead design firm, assisted by A+T Design, Ltd. in Hong Kong and advised by Joanna Lee of Museworks on the Xiqu art form. We have chosen to collaborate with Arup, a global leader in complex building engineering and Peter Walker and Partners of Berkeley, California for the landscape design.

This core team has also proven their willingness to embrace new challenges and work together to break new ground in building form and integrated project design and delivery.





West Kowloon Cultural District Authority
西九文化區管理局

Wong & Ouyang (HK) Ltd. (in collaboration with Diamond and Schmitt)

OUR VISION OF THE PROJECT

- The Xiqu Centre is to be a Celebration of the Xiqu art form and designed to be of the best standard and performance requirements of the Brief.
- The Centre will maximise its exposure to the general public of Hong Kong and Mainland as well as to the International Visitors.
- The Centre shall be a place where the public can enjoy, study and discover the art of Xiqu.
- The Centre will nurture the development of Xiqu and allow it to develop to new heights.

The Xiqu Centre will offer an opportunity for us to develop fit-for-purpose designs for the two Theatres, the Tea House and its associated spaces to be a world-class facility and to become the home base for the performances of Xiqu in Hong Kong, the preservation, development and education of this art form.

The design of the new Xiqu Centre shall be tailor-made to reflect the nuances of the performances, the requirements of the acoustics, as well as provide enough flexibility for the performance of various types of traditional Chinese arts. It is important that the iconic architecture accentuates and celebrates the Xiqu art form. The prime site location for this Centre at the West Kowloon Cultural District (WKCD) will allow the Xiqu Theatre to serve as the gateway to the other facilities that will be built on this district, as well as set itself apart as a Xiqu Centre.

The design must be driven from the interior to satisfy the requirement of the audience and performers of Cantonese Opera. The architecture must also be driven from the exterior to embody the spirit and characteristics of Xiqu without mimicking traditional forms. The Xiqu Centre will foster identity, visibility, communication engagement and distinct presence amongst the contemporary cultural buildings of the WKCD.

With the provision of a home and an identity for Xiqu here in Hong Kong, renowned local Xiqu artists and performers will have better access to participate in their various artistic endeavours. The community's awareness and appreciation of Xiqu could be heightened through performances, workshops with artists and practitioners. Furthermore, the establishment and the identity of the Xiqu Centre could provide a home base where young and local talents can be nurtured. The Xiqu Centre's design will sit in harmony with the neighbourhood and align with the Master Plan of the WKCD. The Wong & Ouyang team will actively engage in client workshops, listen and adopt the recommendations from end-users, the authority and stakeholders throughout the consultation process.

COMPANY PROFILES AND BACKGROUNDS

Wong & Ouyang (HK) Ltd. : Lead Architect

Wong & Ouyang's design approach and methodology are best illustrated by the large scale projects it has completed, including Pacific Place, Hong Kong Convention and Exhibition Centre Phase II and the Artium Link Extension and TaiKoo Place; by urban renewal projects of K7 in Kwun Tong (design stage), Langham Place and Times Square; reflected in its



Hong Kong Convention and Exhibition Centre Phase II and the Atrium Link Extension

master planning for a large residential community in Area 86, Tseung Kwan O (under construction) and Whampoa Garden. Another well-known example of its work include the Centennial Campus Buildings of the University of Hong Kong.

Wong & Ouyang firmly believes that great architecture are achieved through collaboration with clients and stakeholders and this has been proven and seen in our most successful buildings. We also work closely with engineers, planners, experts in different fields of architectural specialization and with construction professionals in order to arrive at the common goals of the Project Team.

Wong and Ouyang team has a proven track record of producing innovative designs over the past 50 years. Our aim is to derive innovation together with cost effective measures. For many projects, Wong and Ouyang has extensive experience in designing innovative designs, expedite the works and reduce the construction cost and time. This innovative design can be illustrated in the various awards afforded to our office.

Diamond and Schmitt Architects : Collaborating Architect

Diamond and Schmitt Architects (DSA), Toronto-based, have completed and designed award winning performing arts buildings worldwide. A large percentage of the work for their firm of 130 staff is focused on this building type. They are accustomed to work with international clients and cross-culturally and this can be seen in their Mariinsky Theatre II in St. Petersburg, Russia and the Harman Centre for the Arts in Washington, D.C., USA. They shall have their staff stationed in Hong Kong for the project.



Four Seasons Centre for the Performing Arts, Canada

Diamond and Schmitt Architects have executed the programming and design for numerous performing arts projects, including the Symphony Orchestra Hall / Max Fisher Center for the Arts in Detroit; the Four Seasons Centre for Performing Arts, Toronto; the Sidney Harman Hall, Shakespeare Theatre in Washington D.C.; The Esplande: Arts and Heritage Centre in Medicine Hat; the Richmond Hill Theatre and the Burlington Performing Arts Centre.

DESIGN TEAM COMPOSITION

- Lead Architect / Interior Designer : **Wong & Ouyang (HK) Ltd.**
(in collaboration with **Diamond and Schmitt Architects**)
- Civil, Geotechnical, Structural and Building Services Engineers : **Ove Arup & Partners HK Ltd.**
- Lighting Consultant : **Lighting Planners Associates (HK) Ltd.**
- Landscape Consultant : **Cicada Pte Ltd.**
- Environmental Consultant : **ERM-Hong Kong Ltd.**
- Traffic Consultant : **MVA (HK) Ltd.**
- Theatre Planner *
- Acoustic Consultant *

Note : * Theatre Planner and Acoustic Consultant will be nominated at Design Competition Stage.